

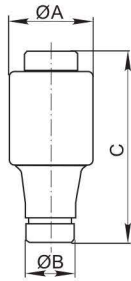
Low Voltage Screw Type Fuse Links

General information

Class
Standard
Rated Voltage
Rated frequency

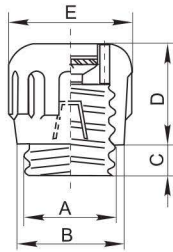
Gg gL
IEC 60269-1
500V
50 Hz

Fuse links



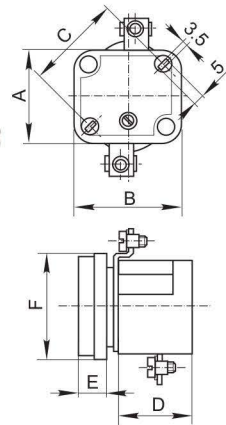
| Type | Order No | Ir | Ur | Colour | Dimensions | | | Weight |
|-----------------|----------|-----|-----|--------|------------|-----|----|--------|
| | | A | V | | Ø A | Ø B | C | |
| mm | | | | | | | | |
| D II E 27 2A | 5027002 | 2 | 500 | pink | 22.5 | 6 | 50 | 27 |
| D II E 27 4A | 5027004 | 4 | 500 | brown | 22.5 | 6 | 50 | 27 |
| D II E 27 6A | 5027006 | 6 | 500 | green | 22.5 | 6 | 50 | 30 |
| D II E 27 10A | 5027010 | 10 | 500 | red | 22.5 | 8 | 50 | 30 |
| D II E 27 16A | 5027016 | 16 | 500 | grey | 22.5 | 10 | 50 | 30 |
| D II E 27 20A | 5027020 | 20 | 500 | blue | 22.5 | 12 | 50 | 34 |
| D II E 27 25A | 5027025 | 25 | 500 | yellow | 22.5 | 14 | 50 | 34 |
| D III E 33 35A | 5033035 | 35 | 750 | black | 28 | 16 | 70 | 45 |
| D III E 33 50A | 5033050 | 50 | 750 | white | 28 | 18 | 70 | 48 |
| D III E 33 63A | 5033063 | 63 | 750 | copper | 28 | 20 | 70 | 51 |
| D III E 33 80A | 5033080 | 80 | 750 | silver | 28 | 20 | 70 | 52 |
| D III E 33 100A | 5033100 | 100 | 750 | red | 28 | 20 | 70 | 52 |

Fuse caps



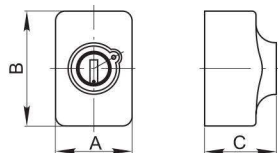
| Type <i>Tun</i> | Order No <i>Каталожен №</i> | Ir | Ur | Dimensions <i>Размери</i> | | | | | Weight <i>Тегло</i> |
|--------------------|--------------------------------|-----|-----|------------------------------|----|----|----|----|------------------------|
| | | A | V | A | B | C | D | E | |
| mm | | | | | | | | | |
| E 27 25A | 5127025 | 25 | 500 | 27 | 32 | 12 | 30 | 36 | 36 |
| E 33 63A | 5133063 | 63 | 500 | 33 | 40 | 12 | 30 | 36 | 65 |
| E 40 100A | 5140100 | 100 | 500 | 42 | 53 | 16 | 40 | 62 | 220 |

Fuse bases PEO type



| Type | Order No | Ir | Ur | Dimensions | | | | | | Weight |
|-----------|----------|-----|-----|------------|----|----|----|----|----|--------|
| | | A | V | A | B | C | D | E | F | |
| mm | | | | | | | | | | |
| E 27 25A | 5227025 | 25 | 500 | 42 | 37 | 36 | 33 | 36 | 36 | 123 |
| E 33 63A | 5233063 | 63 | 500 | 47 | 44 | 43 | 34 | 36 | 36 | 175 |
| E 40 100A | 5240100 | 100 | 500 | 63 | 63 | 67 | 49 | 62 | 62 | 470 |

Fuse bases PES type (with bachelite)



| Type | Order No | Ir | Ur | Dimensions | | | Weight |
|----------|----------|----|-----|------------|----|----|--------|
| | | A | V | A | B | C | |
| mm | | | | | | | |
| E 27 25A | 5327025 | 25 | 500 | 42 | 37 | 36 | 123 |
| E 33 63A | 5333063 | 63 | 63 | 500 | 47 | 44 | 175 |