

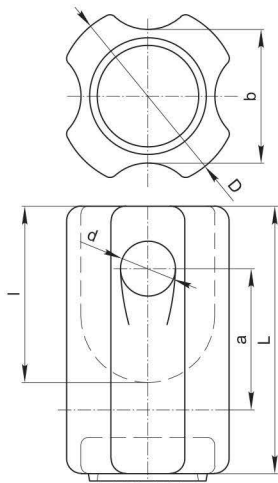
Low Voltage Strain Type Insulators

General information

Type:	54
Glaze colour	Brown
Material	porcelain KER 110-1
Dimensions	ANSI C 29.4
Application	Low voltage overhead distribution lines

Type	Order No	Technical Data					Dimensions					
		Tensile Strength	Low Freq. Dry Flashover Voltage	Low Freq. Wet Flashover Voltage	Creepage Distance	Weight	L	a	b	d	D	l
		kN	kV	kV	mm	kg	mm					
54-1	9751541	44	25	12	41	0.460	89.5	44.5	44.5	16	63.5	59
54-2	9751542	53	30	15	48	0.700	108	57	54	22.2	73	71
54-3	9751543	89	35	18	57	1.500	140	79	60	25.4	86	96.5
54-4	9751544	89	40	23	76	1.900	171	67	60	25.4	-	106

54



Note: All insulators can be produced upon customer's special request